

Key Word Sign NSW Newsletter



Did you know...

- KWS NSW membership is available to any KWS presenter
- Membership for 2015/16 is due at the end of the financial year
- KWS NSW members receive benefits such as callouts to run workshops when services ask for a presenter
- KWS NSW members can advertise workshops on the website
- KWS NSW is running presenter training in October 2015!
- KWS NSW, Victoria and Tasmania are on Facebook!

Winter 2015

News from the Coordinator

I had the privilege of addressing the KWS Breakfast at the AGOSCI Conference in Brisbane in May- and the achievements of KWS NSW were well received.

There are exciting developments in the App World for KWS- check out the reveal later in this newsletter- and also, if you are a Facebook or Twitter person, be sure to connect with KWS NSW. There's recently been some great activity on the FB Page, with excellent responses to the Sign of the Week posts and sharing of other interesting stories. Let us know what you would like to see from KWS NSW in the world of social media.

The big project on the agenda for 2015 will be the bi-annual Presenter Training course- to be held in Penrith, 28 - 31 October. Spread the word!

A very special **CONGRATULATIONS** to our new mums within the KWS Committee- Eleni, Brooke and Nicoli, as they welcome their new additions to their families.

Until next time, *Tarryn*



CONGRATULATIONS: {SignBank 3240} "Good" hand formations, move in alternating forward circles in front of the body.

There's an App for That!!

SPECIAL ANNOUNCEMENT! KWS Australia will release an app for iPad before the end of the year!

This announcement came during the 2015 AGOSCI conference in Brisbane in May from Karen Bloomberg. KWS NSW Coordinator Tarryn Bracken and KWS NSW State Trainer Harmony Turnbull were there to hear the news first hand! KWS Australia is working with Therapy Box (a well established app developer) to design and build the app.

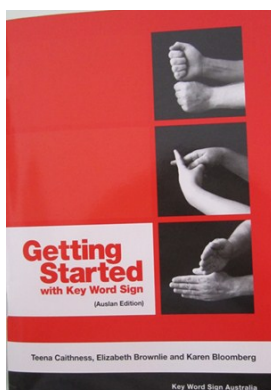
The app will be called: **Tools2Sign** and will include line drawings and descriptions for the Australian core and fringe vocabulary of 600 words (which, with regional variations, equates to over 900 line drawings!)

Features will include:

- the ability to create books and communication aids
- print line drawings
- insert photos and videos
- link to the Auslan sign bank so you can check your sign production!

To keep up to date on the app development, follow KWS Vic and KWS NSW on Facebook. We look forward to seeing the long-awaited app very soon!





*“The role of
KWS
Australia will
focus on...
resource
development
...”*

Key Word Sign Australia Update

KWS Australia was previously hosted by the University of Newcastle. In 2014 this was transitioned over to SCOPE in Victoria. The new online ‘home’ of KWS Australia is: www.scopevic.org.au/key-word-sign-australia

The role of KWS Australia in the future will focus on:

- Liaison between state committees
- Resource development
- Support state training initiatives - Mentor new state trainers and facilitate presenter training
- Research - Function as a clearing house for research into unaided AAC and promote research in Key Word Sign and gesture

Key Word Sign Resources available in the online shop include:

- Getting Started with Key Word Sign (AUSLAN Edition)
- Key Signs CD-ROM
- Key Word Sign Footy Book
- Sign with Me: Learning strategies for Key Word Sign
- Let’s Play with Sign

The web site contains links to:

- Frequently asked questions (NSW & Victoria)
- Nursery Rhymes to Sing, See and Sign (updated – gets most hits and downloads)
- Using your hands to talk (updated)
- Everyday use of sign and gesture
- The history of Key Word Sign in Australia (new paper)
- Using Key Word Sign
- Issues in research

Key Word Sign Presenter Training is Coming!

Presenter Training is happening again in NSW on 28 - 31 October 2015! To become a Key Word Sign Presenter, there is a 3.5 day training course followed by a supervised workshop. This will qualify participants to run KWS Basic Workshops. Applications are open now here: <http://goo.gl/forms/jGcNEpGK5m>

Applicants need to have attended a Basic KWS course within the last 5 years. The training course is intensive and includes lectures with assessment tasks. Topics covered include introduction to communication, augmentative and alternative communication, current research issues, teaching techniques, adult learning and sign production. Presenter training is open to anyone who feels they have an appropriate amount of background knowledge to be able to present the information in a Basic workshop.

If you know of anyone who is interested in attending, email presenter@kwsnsw.com.



Contact Information - New ways to contact KWS NSW!

Email Addresses: membership@kwsnsw.com workshops@kwsnsw.com website@kwsnsw.com committee@kwsnsw.com

New Emails for 2015 signliaison@kwsnsw.com and presenter@kwsnsw.com

Facebook www.facebook.com/Key-Word-Sign-NSW

Twitter [@KeyWordSignNSW](https://twitter.com/KeyWordSignNSW) **Website** www.kwsnsw.com